

OMC Pilot
TODOLIST Control
User Manual

Notices
<ul style="list-style-type: none"> ● The reproduction, transmission or use of this document or its contents is not permitted without express written authority. ● Information and specifications in this document are subject to change without notice. ● While information in this document is well edited and checked, mistake or omission may exist. Please don't hesitate to contact SUPCON if you have any question about this document. ● Please contact SUPCON via email "SMS@supcon.com" if you have any question.

Trademarks
<p>Trademarks or marks SUPCON, SPlant, Webfield, ESP-iSYS, MultiF, InScan, SupField are all registered, registering or using by Zhejiang SUPCON Technology Co., Ltd., which owns the properties of all trademarks or marks above. Without the written authority from Zhejiang SUPCON Technology Co., Ltd, no individual or company shall use any trademarks or marks above. We reserve the right to take legal action for any individual or company using trademarks or marks above illegally.</p>






Symbol Definition	
	WARNING: Indicates information that a potentially hazardous situation which, if not avoided, could result in serious injury or death.
	RISK OF ELECTRICAL SHOCK: Indicates information that Potential shock hazard where HAZARDOUS LIVE voltages greater than 30V RMS, 42.4V peak, or 60V DC may be accessible.
	ESD HAZARD: Indicates information that Danger of an electro-static discharge to which equipment may be sensitive. Observe precautions for handling electrostatic sensitive devices
	ATTENTION: Identifies information that requires special consideration.
	TIP: Identifies advice or hints for the user.

Table of Contents

OMC Pilot TODOLIST Control User Manual	1
Section 1 Overview	1
Section 2 Configure Control Properties	2
Section 3 Permission Requirements before Starting Monitoring	5
Section 4 Use the Control in Real-Time Monitoring	6
Section 5 Revision	8

OMC Pilot TODOLIST Control User Manual

Section 1 Overview

After installing the OMC Pilot component, you can use the TODOLIST control in the flowchart drawing software if your computer has been installed with OMC High-performanceHMI. If OMC High-performanceHMI is not installed in your computer, you can use the TODOLIST control in the control container.

The TODOLIST control is used to display the to-do list of the running procedures of OMC Pilot. After configuring the associated main procedure in the control properties, the running information of the main procedure, the operation buttons, and the running information of each procedure step will be displayed in the to-do list. If the main procedure contains steps that require manual confirmation, you can process the messages to be confirmed directly in the TODOLIST control.

This section only introduces how to use the TODOLIST control. Please follow the sections sequentially to perform operations. For details about how to draw graphics, refer to the introduction in the section "Add Graphics" in the OMC High-performanceHMI software documentation *HMI Config Software User Manual*. For the introduction to the main procedure execution, refer to the section "Run the Procedure" in the OMC Pilot component documentation *OMC Pilot User Manual*.



Attention:

To use the TODOLIST control in the computer without any OMC Pilot server deployed, you need to configure the IP address of the data sever in the OMC Pilot "Basic Settings" of the computer installed with the OMC Pilot client. For details, refer to the section "Basic Settings" in the OMC Pilot documentation *OMC Pilot User Manual*.

Basic Settings

Data Svr | Web Svr | Client Setup | Monitor softw

Server A

Desc: ServerA

IP1: 127 . 0 . 0 . 1

IP2: 0 . 0 . 0 . 0

IP3: 0 . 0 . 0 . 0

Server B

Desc:



IP1: *

IP2: *

IP3: *

OK Cancel

Section 2 Configure Control Properties

1. Click  in the Object Bar, select VxDirToDoList Control in the pop-up control selection box, and click **OK**.
2. The cursor will be displayed as  on the screen. Hold down the left mouse button and drag to set the size of the control and then release the left mouse button to complete the creation, as shown in Figure 2-1.

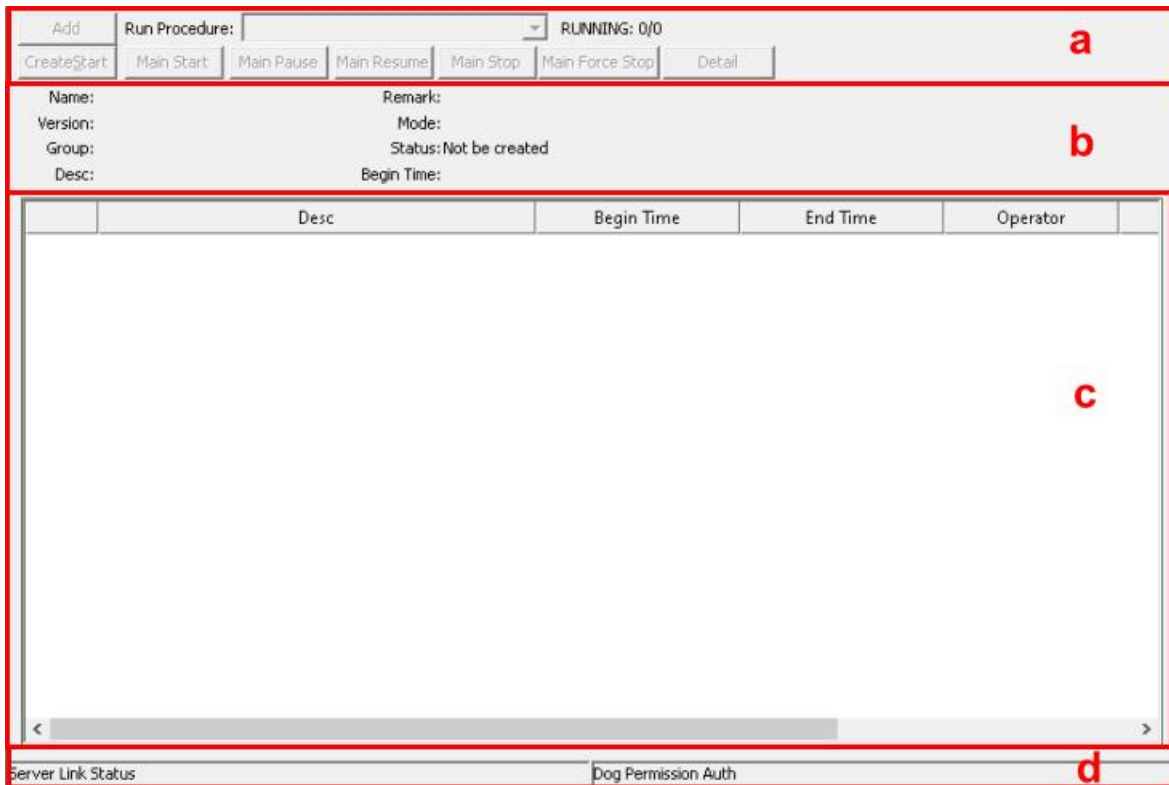


Figure 2-1 Introduction to the Control

Table 2-1 describes the composition of each part of the control and the function of each part.

Table 2-1 Each Part of the Control

No.	Name	Function and Display Description
a	Main procedure's operation command	It is used to control the execution of the main procedure during the monitoring period and perform operations such as starting, stopping, and resuming the main procedure
b	Main procedure information	It is used to display the running information of the main procedure during the monitoring period
c	Procedure step display area	It is used to display the running information of each procedure step in the main procedure, including content, operation type, start time, end time, operator, operation remarks, etc. If it is a manual interactive step, you can perform the manual operation with the button in the "Type" column
d	Status bar	It is used to display the OMC Pilot server status and authorization information

3. Double-click the newly added control to open the "Properties" dialog box, as shown in Figure 2-2.

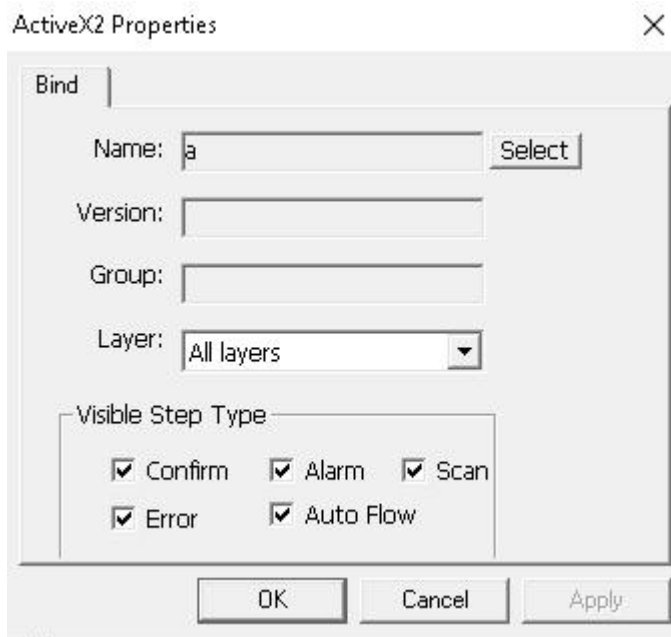


Figure 2- 2 Set Properties of the Control

4. Click **Select** on the right side of the "Name" text box and select the main procedure to be associated with the control in the dialog box (you can filter main procedures by procedure name, group, and version), as shown in the figure below. The version and group information of the main procedure will be displayed in the "Version" and "Group" text boxes, respectively.

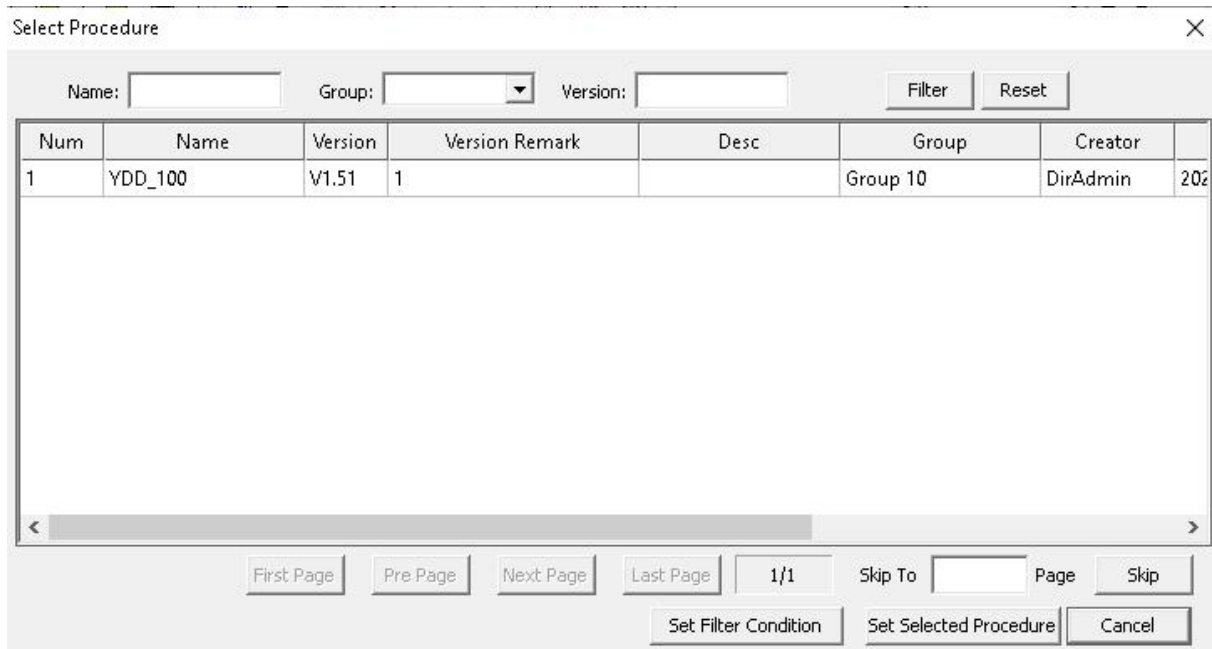


Figure 2- 3 The "Select Procedure" Dialog Box

5. Select the layer you want to display in the "Layer" drop-down list.
6. In the "Visible Step Type", you can configure the desired steps to be displayed in the

TODOLIST control. The available types are "Confirm", "Alarm", "Scan", "Error", and "Auto Flow".

7. After completing the configuration, click **Apply** and then click **OK**.



Tip:

- In one graphic, you can add up to 16 controls.
 - The main procedure with which the control can be associated **MUST** be in the "EFFECTIVE" status in OMC Pilot. If you cannot find the desired main procedure in the list, check whether the main procedure has been compiled and has taken effect under the "Procedure Builder" node of the OMC Pilot component.
-

Section 3 Permission Requirements before Starting Monitoring

Before using the TODOLIST control to manage procedures in the OMC High-performanceHMI software, make sure that the user that has logged in to the OMC High-performanceHMI software and OMC Pilot simultaneously meets the following requirements:

- OMC High-performanceHMI software (for detailed configuration steps, refer to the OMC High-performanceHMI software documentation *User Access Software User Manual*):
 - The user has permission to manage the operation group where the TODOLIST control is located.
-



Tip:

When the control is not used together with the OMC High-performanceHMI software, the current Windows user will be used as the login user.

- OMC Pilot software (for detailed configuration steps, refer to the OMC Pilot component documentation *OMC Pilot User Manual*):
 - The role with which the user is associated has the operation permission of the group where the main procedure is located. That is, you have selected the specified group on the "Group Permission" page in the "User Security" > "Role Manage" module.
 - The role has the procedure execution permission of the group where the main procedure is located. That is, you have selected the procedure execution permission for this role on the "Operation Permission" page in the "User Security" > "Role Manage" module.

Section 4 Use the Control in Real-Time Monitoring

After successfully logging in to the monitoring software, you can view the monitoring period interface of the TODOLIST control, as shown in Figure 4- 1.

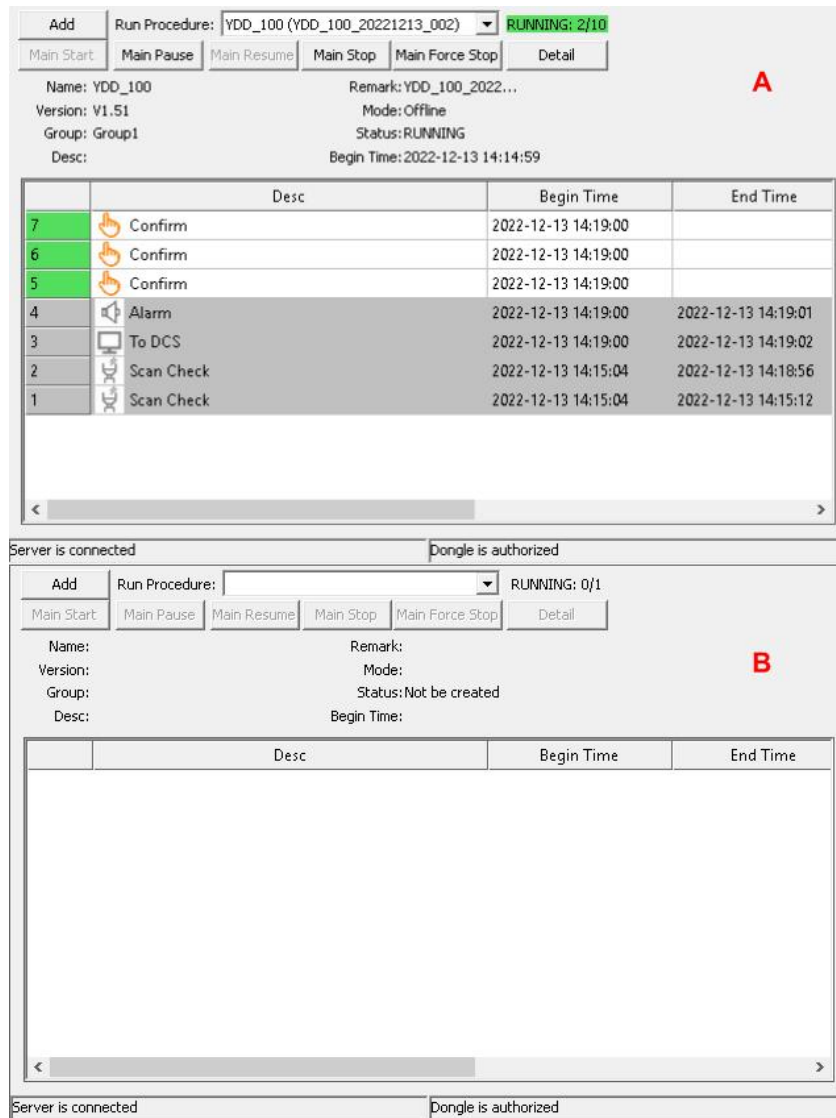




Figure 4- 1 Example of the To-do List in Real-time Monitoring

Depending on the status of the selected main procedure, you can perform different operations:

- If the main procedure you select is in the "Running" status in OMC Pilot, the TODOLIST control will directly display the main procedure's running information, operation buttons, and the running information of each procedure step in the OMC High-performanceHMI software, as shown in control A in Figure 4- 1. The steps are displayed in reverse chronological order and the step being executed is displayed at the top of the list. Then double-click the cell with the icon  or  in the "Type" column and confirm the

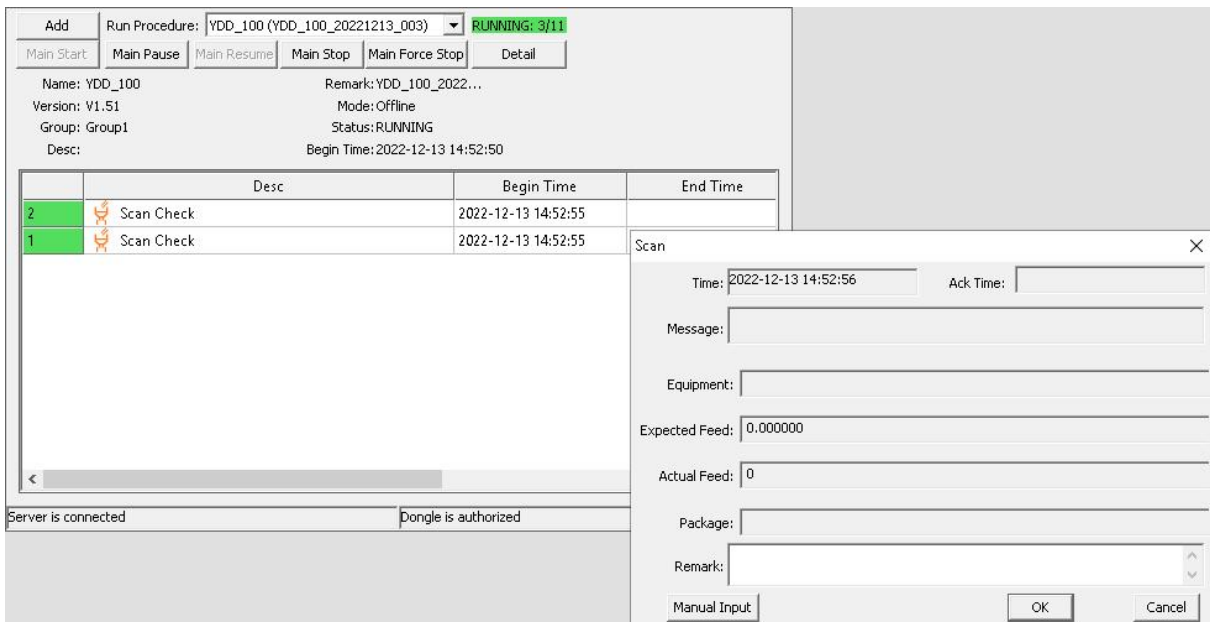
message in the pop-up dialog box.

- If the main procedure you select is not in the "Running" status in OMC Pilot, the TODOLIST control will be displayed as control B in Figure 4- 1 in the OMC High-performanceHMI software. Click **Add** to create a procedure instance. Then, you can start or stop the procedure using the operation commands above the list. After starting the main procedure, you can view the running status of the main procedure and procedure steps, as shown in control A in Figure 4- 1.
- When a step has been completed in the selected main procedure, the background colour of the step will change to grey in the TODOLIST control, as shown in Figure 4- 2.

5		Confirm	2022-12-13 14:19:00	
4		Alarm	2022-12-13 14:19:00	2022-12-13 14:19:01

Figure 4- 2 The Completed Step

- When the selected main procedure reaches “Confirm”, “Alarm”, and “Custom Scan” steps, the TODOLIST control will automatically open an interactive dialog box, as shown in Figure 4- 3.



The screenshot shows the OMC Pilot TODOLIST control interface. The main window displays the procedure 'YDD_100 (YDD_100_20221213_003)' in a 'RUNNING' state. It includes buttons for 'Main Start', 'Main Pause', 'Main Resume', 'Main Stop', 'Main Force Stop', and 'Detail'. Below these, a table lists the procedure steps:

	Desc	Begin Time	End Time
2	Scan Check	2022-12-13 14:52:55	
1	Scan Check	2022-12-13 14:52:55	

An interactive dialog box titled 'Scan' is open, showing the following fields:

- Time: 2022-12-13 14:52:56
- Ack Time: (empty)
- Message: (empty)
- Equipment: (empty)
- Expected Feed: 0.000000
- Actual Feed: 0
- Package: (empty)
- Remark: (empty)

At the bottom of the dialog box are buttons for 'Manual Input', 'OK', and 'Cancel'. The main window also shows status indicators: 'Server is connected' and 'Dongle is authorized'.

Figure 4- 3 The Interactive Dialog Box

- Click **Detail** to open the OMC Pilot Client, where the current step configuration is displayed. The effect is as shown in the figure below.

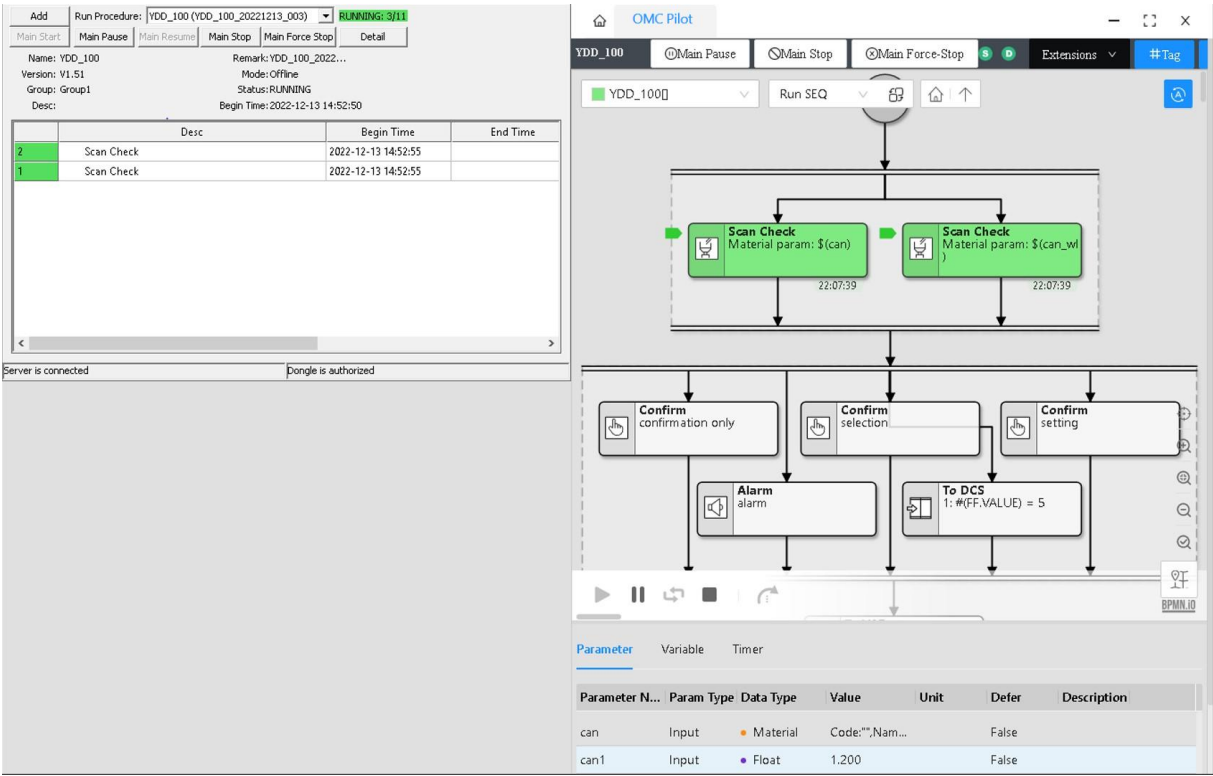


Figure 4-4 The Procedure Detail



Tip:
When the OMC Pilot Client is already opened, clicking Detail will not open a new client.

The operations that can be performed with the control in the OMC High-performanceHMI graphics are the same as those during the running period in the OMC Pilot component. For details, refer to the section "Run the Procedure" in *OMC Pilot User Manual*.

Section 5 Revision

Table 5-1 Revision List of Each Version

Document Version	Applicable Models	Remarks
V1.0 (20230313)	OMC Pilot V1.90.50.04 OMC High-performanceHMI V4.70.00.00	The first edition.